



Hytrol Catalog

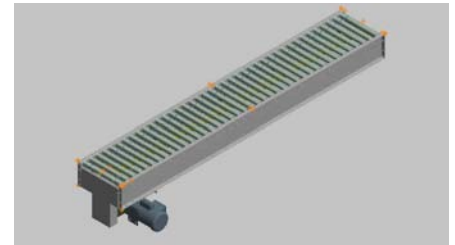


190-NSP

Minimum-Pressure Roller Spool Conveyor

The Model 190-NSP Live Roller Spool Conveyor is a general transport conveyor with the capabilities of accumulating products with back pressure. Quiet operation, versatile design, easy installation and maintenance make the 190-NSP conveyor a valuable component in operations requiring high performance with minimal downtime.

- Reversible
- Adjustable MS-Type Floor Supports Available

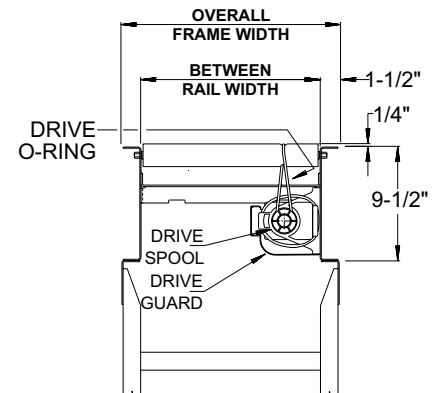
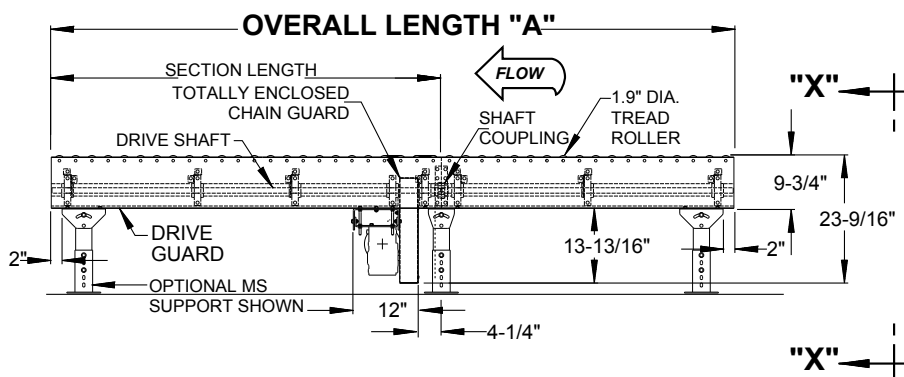


Conveyor shown in Standard Gray.

OTHER STANDARD COLORS

Size To Order Overall Length "A"	Between Rail Width Overall Frame Width	15"	21"	27"	33"	39"
		18"	24"	30"	36"	42"
5'	Weights (lbs.) Based on 3" Roller Centers	236	272	307	341	376
10'		384	450	514	576	639
15'		533	629	721	811	902
20'		682	808	928	1046	1166
25'		830	987	1135	1281	1429
30'		979	1166	1342	1517	1692
35'		1128	1344	1549	1752	1956
40'		1276	1523	1756	1987	2219
45'		1425	1702	1963	2222	2483
50'		1574	1881	2170	2458	2746
55'		1723	2060	2377	2693	3009
60'		1871	2239	2584	2928	3273
65'		2020	2417	2791	3163	3536
70'		2169	2596	2998	3399	3800
75'		2317	2775	3205	3634	4063
80'		2466	2954	3412	3869	4326
85'		2615	3133	3619	4104	4590
90'	2764	3311	3826	4340	4853	
95'	2912	3490	4033	4575	5117	
100'	3061	3669	4240	4810	5380	

All weights in catalog are conveyor weights only. Accessories, crating, etc., are not included.



190-NSP

Standard Specifications

BED – Roller bed with 1.9 in. dia. roller x 16 ga. galvanized tube spaced every 3 in. Mounted in 9 1/2 in. x 12 ga. powder-painted formed steel channel frame bolted together with splice plates.

CROSS BRACING – Rods with turnbuckles are fastened to underside of bed to provide proper alignment of bed rollers and insure correct product tracking. Supplied to section adjoining drive and every other section, 20 ft. bed lengths and over. Supplied on bed lengths 9 ft. and over.

DRIVE – Mounted underneath, placed near center of conveyor. Note: On conveyors less than 24 in. OAW motor extends beyond frame. Chain guard located on left-hand side.

DRIVE SHAFT – 1 in. dia. steel shaft extends full length of conveyor. Chain coupling at bed joints. Located on left-hand side.

DRIVE SPOOLS – 2 in. dia. Delrin spool held in place on drive shaft with spool spacers.

DRIVE GUARD – Underside of drive shaft with spools and drive o-rings guarded full length of conveyor.

DRIVE O-RING – 3/16 in. dia. polyurethane o-ring from drive spool to tread rollers.

BEARINGS – Sealed, pre-lubricated, self-aligning ball bearings with eccentric lock collar on drive shaft. Pre-lubricated ball bearings in tread rollers.

SPEED REDUCTION – Sealed worm gear C-face speed reducer. No. 50 roller chain to drive shaft.

MOTOR – 1/2 HP, 208/230/460/575V, 3 Ph. 60 Hz. Totally enclosed C-face.

CONVEYING SPEED – Constant 65 FPM.

CAPACITY – Maximum load per powered roller: 15 lbs. Note: Maximum load capacity will be less for products with soft or irregular bottoms. Total load NOT TO EXCEED capacity in chart.

FLOOR SUPPORTS – Supplied as optional equipment.